

Features

TrueSite Incident Commander provides 4100ES mounting for the Simplex® TrueSite Workstation:

- **All-in-one touchscreen computer/monitor** mounts in a 4100ES cabinet and is powered from the fire alarm system power supply, including battery backup
- **Seismic hardware;** 4100ES mounting with battery brackets provides seismic area protection (see page 4)
- **High resolution** (1280 x 1024), 19" (483 mm) touchscreen monitor
- **Includes Windows 7 Professional** 32-bit operating system
- **Hinged mounting bracket** allows convenient service access
- **Available for desktop use** operating at 120 VAC with an included power supply module

TrueSite Incident Commander function summary:

- **Simplex® fire alarm network connected** graphical interface control
- **Connects to the Simplex fire alarm Network** as a node allowing access to remote panel activity status, and for a Mass Notification System event or a fire alarm event, can take control of remote panel activity over the fire alarm network
- **Available TCP/IP, LAN/WAN connections;** up to 20 remote clients can be connected to the server for multiple remote users; with dedicated and listed Fire Alarm LAN equipment, listed remote clients can have control access
- **Supports standard fire service annunciation icons** to provide firefighter and first responders with critical fire response information
- **Custom alarm and system messages** can intuitively guide emergency responders; important information (HAZMAT locations, contact information, etc.) can be quickly presented
- **Color graphical annunciation and control** capacity for up to 50,000 points or point groups
- **Floatable and dockable windows** allows windows to either be fixed (docked) or floatable
- **Extensive historical logging;** up to 500,000 events with operator notations
- **Optional interface to Digital Alarm Communicating Receiver (DACR)** integrates multiple systems onto a single Incident Commander
- **Multiple password controlled** operator levels
- **Available optional connections** for printers or other compatible systems
- **Dual monitor support** allows the Alarm List Window to be on one monitor and the Graphics Window on the other

Graphic screens details:

- **Pan-and-zoom features** allow precise navigation
- **Configurable coverage zones** allow user defined zones within a graphics screen to highlight to indicate the area of activity without zooming into the point of interest
- **Auto-jump** allows the screen view to jump to a graphic or alarm list menu



TrueSite Incident Commander Mounts in Bay 2 of a 4100ES Control Panel (shown with Master Controller)



Desktop TrueSite Incident Commander

Additional Incident Commander system features:

- **Test Mode** allows unobtrusive testing of selective devices without nuisance interruptions
- **Node Name** allows a description of the specific building or area associated with a point in views and reports
- **Vector information to supervised clients;** select by point, event category, panel, or custom list
- **Email generation** is available to send updates to individuals or to distribution lists with selectable content
- **Sound files (WAV)** can be used to create custom audible status annunciation using Agency listed desktop PC model 4190-7014 and integral PC speakers
- **Fahrenheit or Celsius** temperatures can be displayed

(Continued next page)

* Refer to pages 5 and 6 for specific product listing details. This product has been approved by the California State Fire Marshal (CSFM) pursuant to Section 13144.1 of the California Health and Safety Code. See CSFM Listing 7300-0026:323 for allowable values and/or conditions concerning material presented in this document. It is subject to re-examination, revision, and possible cancellation. Additional listings may be applicable; contact your local Simplex product supplier for the latest status. Listings and approvals under Simplex Time Recorder Co. are the property of Tyco Fire Protection Products.

Additional system features (Continued):

- **DACR Account Filter** allows Historical Log Reports to be Filtered by DACR Account for Quick Access and Verification of Information associated with an Individual Account
- **Operator Notes** allows an operator to log operator notes associated with individual events for historical records and retrieval
- **Web Browser Command Link** enables the ability to easily call up an external web page or link (web-cam, etc.) with a single command button on a graphic screen

Agency listings:

- UL 864 & ULC-S527 as Control Unit Annunciator
- UL 864 for Fire Proprietary Supervising Station
- UL 1076 & ULC-C1076 for Proprietary Security
- UL 1610 & ULC-S559 for Central Station Security
- UL 864 UUKL as Firefighter Smoke Control Station

Simplex Fire Alarm Network capabilities:

- Multiple TrueSite Incident Commanders and TrueSite Workstations can be nodes on the same fire alarm network to provide redundant operations for improved survivability
- Standard fire alarm network connection for wired or fiber optic media
- Graphical network diagnostic tools
- Set-host service functions allow access to remote network node data including individual TrueAlarm analog sensors
- Provides event printing (with compatible printer), view or print of status and service report information, and print graphic screens (see page 6 for printing details)
- Please refer to TrueSite Workstation data sheet S4190-0016 for additional operation detail

Description

The TrueSite Incident Commander offers TrueSite Workstation operation in an all-in-one package providing a touchscreen computer, monitor, hard drive, and required input/output connections all in single assembly. This allows installation within a 4100ES fire alarm control panel or remote annunciator with power supplied from the fire alarm power supply and secondary batteries. This package is also available for desktop applications.

Network Annunciation. TrueSite Incident Commanders provide annunciation, status display, and control for Simplex Fire Alarm Networks using a personal computer based graphical interface with a high resolution, color display. Response buttons with realistic icons provide control switches specific to the operation being performed.

Remote Clients. For remote viewing of TrueSite Incident Commander Server information, remote clients are available and connected using TCP/IP LAN/WAN Ethernet communications. As discussed on pages 7 and 8, Remote Clients can be annunciation only, or capable of system control when configured with agency listed hardware.

DACR Compatible. For systems requiring information from remote control panels via DACTs (Digital Alarm Communicating Transmitters), Incident Commanders can be equipped to communicate directly with a compatible DACR.

TrueSite Incident Commander Operation

Operation. When fire alarm network status changes occur, the screen displays the type and location of the alarm (or other activity) and the appropriate header buttons appear. In the historical log screen on page 3, Figure 1, Fire, Priority 2, Supervisory, and Trouble buttons are shown with an active Trouble indicated.

Sample Screens. Figure 1 (on page 3) is representative of a historical view screen. Figure 2 (on page 4) is representative of a system graphic screen with icons representing the devices of interest. Screen choices can be configured per system preference, however, when using an optional second monitor, both screen types can be visible for operator convenience.

Ease of Operation. With touchscreen monitors, the operator touches the screen area in alarm (or uses the mouse control) to access a more detailed view of the alarmed zone or device. With the proper password access, the operator has the ability to acknowledge alarm conditions, activate signal silence, and perform system reset directly from the Incident Commander screens.

Programmable Activity Timeout allows an unattended monitor to revert to the login screen when the configured time period expires.

Individual User Preferences appear when the user logs in. Options include: Font Size (default or large); Toolbar Size (small or large); Interface Theme (MS Office 2003 or System); Floating Window Options (select whether to show Menu bar or show Tool bar).

Historical Log and List Details. Figure 1 on page 3 shows historical log details. The display format is similar to the display for active list items such as the alarm list. Displayed information can be sorted on-screen by each category shown (number, time, date, point name, etc.). List information can be reviewed on the screen, printed at a local or remote system printer, or can be written to an electronic file for compatibility with spreadsheet and database programs.

Customized Response. Custom alarm and trouble messages can be added and field edited to provide operator response assistance. Point specific information, such as hazardous material storage and lists of people to notify, can be automatically or selectively displayed.

Password Control

Multiple Access Levels. Operator access level is determined during log-in. Select functional access to match the training and responsibility of the operator. Operators with additional TrueSite Incident Commander and fire alarm network training may be qualified for access to sensitive areas. For operators who are primarily concerned with immediate facility security, a lower level access will provide the information necessary for proper response but will not allow access to key parameters that determine overall system/network operation.

Graphics Screens

Site and Floor Plan Details. Graphics screens can provide easily recognizable site plan and floor plan information. The level of detail can be customized for the specific facility to easily and accurately direct the operator to the immediate area of interest.

Graphic Screen Controls. (refer to graphic screen on page 4) Icons can be added to identify the location and type of the device of interest and the graphics control toolbar (located at the top of the graphic) can be used to pan and zoom for more precise detail. Programmable coverage zones can be added with selectable area and zoom level. A fixed area site plan (key plan) with action buttons and screen locator can be added as shown. Pan and zoom are tracked by a green rectangle in the key plan.

Custom Banner and Main Screen Background.

The banner area shown with a Simplex logo in Figure 1 can be customized (bitmap area is 1750 x 68 pixels). The main screen background (viewable prior to login) can be customized with a bitmap of up to 1000 x 525 pixels.

Action Messages. In addition to screen text or graphic information, the operator can be presented with specific action messages that provide emergency response information and directions. These action messages are easily field edited for local requirements. The appropriate action message in a graphics screen would be found in an Acknowledge dialog box.

Graphics Screens (Continued)

Auto-Jump to Graphics or Alarm List. Select whether activity should cause a jump to a list format or to the associated graphic screen.

Supported Graphics Formats:

- DWG Import Formats: AutoCAD R9, 10, 11-12, 13, 14, 2000-2002, 2004-2006, 2007-2009, 2010-2011
- DXF Import Formats: AutoCAD R14 and 2000
- Export Formats: AutoCAD 2000 DWG/DXF format (allows editing in AutoCAD 2000 or later)
- Import drawing files: DWG, WGS, IMS/GCC DOC files, WMF, BMP, GIF, and JPG

Individual Point Service Access

Qualified Operator Detail Access. The Incident Commander operator's interface provides service level access to network information that is not normally "public." Network "private" point information can be accessed using the Set-Host feature, and logging into the database of the network and node of interest. With this operation, individual point information can be accessed and controlled as required by qualified service personnel with proper password access.

Number	Time	Date	Point Name	Node Name	Description	Point Type	Status	Operator	Notes
174	07:28:58	FRI 3-DEC-10			AUTOMATIC SYSTEM SHUTDOWN PERFORMED				
175	08:08:50	FRI 3-DEC-10	P361	(NODE 3) Central TSW	DACR PORT 1 COMMUNICATIONS LOSS	TROUBLE POINT	ABNORMAL		
176	08:08:50	FRI 3-DEC-10	P92	(NODE 3) Central TSW	SYSTEM COLD START	TROUBLE POINT	ABNORMAL		
177	08:08:53	FRI 3-DEC-10	A6	(NODE 3) Central TSW	SYSTEM BASE YEAR	COUNTER	ON		
178	08:08:53	FRI 3-DEC-10	A47	(NODE 3) Central TSW	ENABLE OPERATION COUNTER SETPOINT	ANALOG VALUE	ON		
179	08:08:53	FRI 3-DEC-10	A48	(NODE 3) Central TSW	PC SPEAKER SHUT OFF TIMER SETPOINT	ANALOG VALUE	ON		
180	08:08:53	FRI 3-DEC-10	A39	(NODE 3) Central TSW	NUMBER OF CONFIGURED NETWORK LOOPS	COUNTER	ON		
181	08:08:53	FRI 3-DEC-10	A46	(NODE 3) Central TSW	INACTIVITY TIMEOUT DELAY SETPOINT	ANALOG VALUE	ON		
182	08:08:53	FRI 3-DEC-10	A50	(NODE 3) Central TSW	SYSTEM RESET INHIBIT TIMER SETPOINT	ANALOG VALUE	ON		
183	08:08:53	FRI 3-DEC-10	A58	(NODE 3) Central TSW	REMOTE ACCESS LEVEL CONTROL	ANALOG VALUE	ON		
184	08:08:53	FRI 3-DEC-10	A58	(NODE 3) Central TSW	MAX ACCESS LEVEL CHANGE FROM NODE 3	LEVEL 0 TO 7	CURRENT OPERATOR NOT AFFECTED		
185	08:08:58	FRI 3-DEC-10	P411	(NODE 3) Central TSW	REM CLIENT MISSING: s1	TROUBLE POINT	ABNORMAL		
186	08:08:58	FRI 3-DEC-10	P361	(NODE 3) Central TSW	DACR PORT 1 COMMUNICATIONS LOSS	TROUBLE POINT	ABNORMAL		
187	08:09:01	FRI 3-DEC-10			LEFT END	NODE 0			
188	08:09:01	FRI 3-DEC-10			RIGHT END	NODE 0			
189	08:09:01	FRI 3-DEC-10			MONITOR	NODE 2			
190	08:09:14	FRI 3-DEC-10		(NODE 3) Central TSW	LOGIN AT LEVEL 6			OPERATOR # 006	
191	08:10:08	FRI 3-DEC-10		(NODE 3) Central TSW	TROUBLE GLOBAL ACKNOWLEDGE				
192	08:10:16	FRI 3-DEC-10	P238	(NODE 3) Central TSW	NETWORK INITIALIZATION IN PROGRESS	TROUBLE POINT	ABNORMAL		
193	08:10:17	FRI 3-DEC-10	2:M1-4-0	(NODE 2) West Building	DIAL A HEAD	SMOKE DETECTOR	NO ANSWER		
194	08:10:30	FRI 3-DEC-10	2:M1-1-0	(NODE 2) West Building	FLOOR 6 ROOM 1001	PULL STATION	FIRE ALARM		
195	08:10:30	FRI 3-DEC-10	2:SIG3	(NODE 2) West Building	SIGNAL CARD 1 CIRCUIT SIG3	SIGNAL CIRCUIT	ON		
196	08:10:34	FRI 3-DEC-10		(NODE 3) Central TSW	ALARM GLOBAL ACKNOWLEDGE				
197	08:10:45	FRI 3-DEC-10	P97	(NODE 3) Central TSW	SIGNAL SILENCE REQUEST	UTILITY POINT	ON		
198	08:10:45	FRI 3-DEC-10			ALARM SILENCE REQUESTED				
199	08:10:45	FRI 3-DEC-10			ALARM SILENCE IN PROGRESS				
200	08:10:45	FRI 3-DEC-10	P97	(NODE 3) Central TSW	SIGNAL SILENCE REQUEST	UTILITY POINT	OFF		
201	08:10:47	FRI 3-DEC-10	P96	(NODE 3) Central TSW	SYSTEM RESET REQUEST	UTILITY POINT	ON		
202	08:10:47	FRI 3-DEC-10			FIRE SYSTEM RESET REQUESTED				
203	08:10:47	FRI 3-DEC-10			FIRE SYSTEM RESET IN PROGRESS				
204	08:10:47	FRI 3-DEC-10	P96	(NODE 3) Central TSW	SYSTEM RESET REQUEST	UTILITY POINT	OFF		
205	08:10:46	FRI 3-DEC-10	2:P212	(NODE 2) West Building	DETECTOR/SYSTEM RESET	UTILITY POINT	ON		
206	08:11:12	FRI 3-DEC-10	2:SIG3	(NODE 2) West Building	SIGNAL CARD 1 CIRCUIT SIG3	SIGNAL CIRCUIT	OFF		
207	08:11:17	FRI 3-DEC-10			NO FIRE ALARMS PRESENT, SYSTEM RESET CC				

Figure 1. TrueSite Incident Commander Sample Historical Log Screen

Seismic Testing

The 4100ES cabinet mounted TrueSite Incident Commander design has been seismic tested and is certified to IBC and CBC standards as well as to ASCE 7-05 categories A-F, with 33 Ah or 50 Ah batteries and battery brackets as detailed on data sheet S2081-0019.

Network Diagnostics

Graphical Network Status Views. Automatic, built-in diagnostics are available to provide graphical views of Network topology and Network status. Missing communications links due to wiring breaks or shorts as well as inactive network nodes are indicated clearly to guide in returning the system to normal. Information screens are available to provide detail about each specific network node. Network level functions such as timekeeper node and monitor node are indicated as well as identification of the node being used for the diagnostic.

Version Compatibility

Compatibility with TrueSite Incident Commanders requires the 4100ES, 4010ES or other panels per the following software versions.

Fire Alarm Network Interface (4120)	
4190 GCC/IMS/NPU	Master Version 2.07 (or later)
4100U	Master Version 11.03 (or later)
4100	Master Version 9.02 (or later)
4020	Master Version 9.02 (or later)
4010	Master Version 3.01 (or later)
4002	Network Firmware Version 3.20.92 (or later)

Sample Graphic Screen

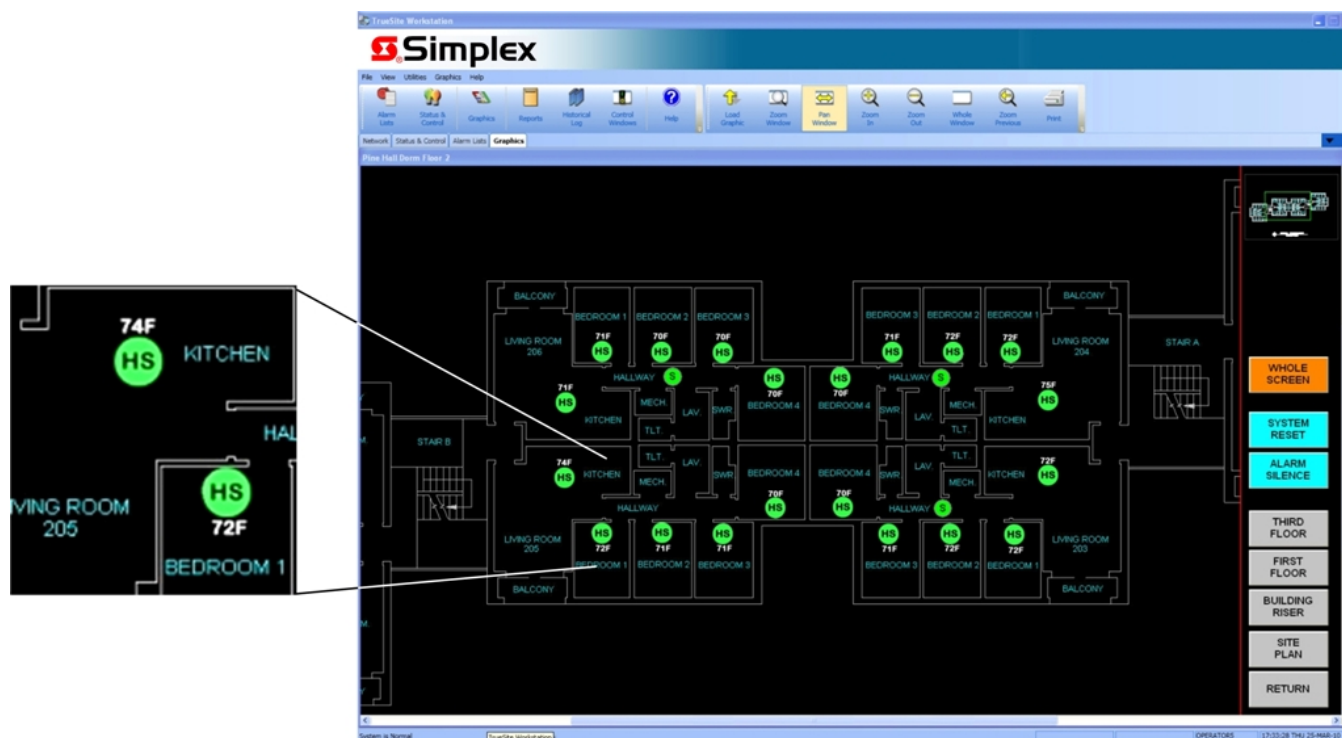


Figure 2. TrueSite Incident Commander Sample Graphic Screen

Note: This sample graphic screen demonstrates heat sensors (HS) dynamically displaying their local temperature readings

TrueSite Incident Commander Product Selection

Category	Model	Description
Hardware Systems* (select as required) Includes Windows 7 Professional 32-bit and bracket for securing AC input wiring for desktop; requires selection of TrueSite Incident Commander operation software from below	4190-8404	TrueSite Incident Commander Listings: UL 864 & ULC-S527, Control Unit Annunciator; UL 1076, Proprietary Burglar Alarm Annunciator; UL 1610 & ULC-S559, Central Station Annunciator
	4190-8405	TrueSite Incident Commander Proprietary Supervising Station Listings: UL 864 as Fire Proprietary Supervising Station, requires UPS or other Secondary Power source per applicable local code, if using a DACR, select the Bosch D6600 with CID format; UL 1076, Proprietary Burglar Alarm Multiplex Receiving Unit; UL 1610, Central Station Control Unit, with listed DACR; ULC-S559, Central Station Receiving Station; ULC-C1076, Proprietary Burglar Alarm Central Station Control Unit
	4190-8411	TrueSite Incident Commander Remote Client Listings: UL 864 & ULC-S527, Control Unit Annunciator

* **Note:** Ethernet Switch Products for dedicated Server/Remote Client applications are detailed on data sheet S4190-0018, but can be combined with TrueSite Incident Commander Equipment orders.

Category	Model	Description
Aftermarket Additions	4190-8901	Aftermarket hardware addition
	4190-8605	Aftermarket software addition
Mounting Type (select one as required)	4190-7013	4100ES Cabinet Mount; shipped separately and installed on-site; 4100ES boxes, doors, and dress panels are ordered separately, see hardware reference below for model numbers
	4190-7014	Desktop
Applications Software (select one per application)	4190-5050	TrueSite Incident Commander Server Software, includes: License, Security Dongle, Documentation; requires 4190-8404 or 4190-8405
	4190-5053	TrueSite Remote Client Installation CD, no operating system; requires 4190-8411 or 4190-8605
Server Feature Option	4190-5060	Feature code for TrueSite Incident Commander Server with DACR interface
Remote Client Type Selection (Select One Per Remote Client)	4190-5061	Feature code for Remote Client with restricted features (reduced feature set)
	4190-5062	Feature code for Remote Client with password protected feature access
Serial Port Option (for Server only)	4190-6034	Quad RS-232 Serial Port PCI Card, select when more than two serial ports are required; PCI Slot card with pluggable terminal block output; one 4190-6026 suppressor is required per connection (see below)
Serial Port Connectors (select as required)	4190-6002	Transient Protected Connector, select one per connection to a standard PC RS-232 serial port
	4190-6026	Transient Protected Connector for Quad Serial Port Card; one required per connection
	4190-6010	Transient Suppressor for LAN/WAN Connection; <i>required for agency listing for each TrueSite Incident Commander Server LAN connection</i>
Internal PCI Card Options (Workstation Server only, select <u>two</u> maximum as required)	Configured	Description
	4190-6060	4190-9828 Network Interface Module for fixed, wired in/out connections; PCI Slot card
	4190-6061	4190-9829 Modular Network Interface Module (select Media Modules separately, listed below); PCI Slot card
Media Modules for Modular Network Interface (as required)	4190-6036	4190-9822 Wired Media
	4190-6037	4190-9823 Fiber Optic Media

Category	Model	Description
Programming (select)	4190-8122	TrueSite Incident Commander Programming; select Programming Items below
Programming Items (select items per system requirements; select quantity of items as required) requires selection of 4190-8122	4190-4006	AutoCAD DXF or DWG file, one floor plan (multiple floor plans require dedicated files)
	4190-4008	25 Custom Action Messages
	4190-4009	25 Travel Screen Keys (selective zooming)
	4190-4010	25 Status Icons
	4190-4011	25 Control Functions; On/Off, Bypass, etc.
	4190-4012	Convert one (1) Existing IMS Screens to TrueSite Incident Commander Screen
	4190-4013	10 Coverage Zones; order quantity as required
	4190-4014	One (1) Emergency Communications/Mass Notification Control Screen (see screen on p. 6)

Hardware Reference for Mounting TrueSite Incident Commander in Bay 2 of a 4100ES Fire Alarm Control Panel

Required Identifier	4100-7909	Designates that the 4100ES fire alarm control panel is to be shipped with bay 2 empty			
Selection Type	Description	Platinum 2 Bay	Platinum 3 Bay	Red 2 Bay	Red 3 Bay
Combined Box and Door	Box with Glass Door & Dress Panel	2975-9459	2975-9457	2975-9460	2975-9458
Separate Box and Door (select if boxes and doors are required to be shipped separately)	Box only	2975-9439	2975-9440	2975-9408	2975-9409
	Glass Door & Dress Panel	4100-2107	4100-2108	4100-2127	4100-2128

(Continued on next page)

TrueSite Incident Commander Product Selection (Continued)

Model	Description
4100-9615 (not FM Approved as of document revision)	Remote Annunciator Panel Mount; includes expansion bay with power distribution interface module (PDI); Bay 2 is dedicated for Incident Commander , order box and door separately (4100-7909 is not required); Select: RPS Remote Power Supply and 4100-0620 Basic interface; also allowed: 4100-1272 Phone Cards, 4100-1273 Phone Class A Adapters, 4100-6038 RS-232 Card, 4100-1293 Panel Mount Printer, and 4100-1290 24 Point I/O; order cabinet hardware separately per hardware for control panels on page 5; refer to data sheet S4100-0038 for more Remote Annunciator details; Note: Refer to page 8 for power supply applications guidelines

TrueSite Incident Commander Equipment Specifications

(Please note that equipment and specifications may vary due to equipment design changes)

Panel Mount Touchscreen Computer/Monitor (Note: Refer to page 8 for power supply applications guidelines)

Model	Space Requirement	Current Requirements with 24 VDC Power from Control Panel		
4190-7013*	Mounts in bay 2 of a 2-bay or 3-bay 4100ES cabinet	4190-7013 with Modules Listed	Supervisory	Alarm
		with 1 Network Card	2.1 A	2.25 A
		with 2 Network Cards	2.37 A	2.52 A
		with 1 Network Card and 1 Quad Serial Card		
Individual Module Current Reference		4190-6034 Quad Serial Card	270 mA	
		4190-6060/4190-9828 Network Card with fixed media	270 mA	
		4190-6061/4190-9829 Modular Network Card with two media modules, either 4190-6036/4190-9822 Wired, or 4190-6037/4190-9823 Fiber	270 mA	

Desktop Touchscreen Computer/Monitor

Model	Dimensions (see diagram on page 8)	Input Power
4190-7014*	17 13/16" W x 16 11/16" H x 8 3/4" D (452 mm x 425 mm x 221 mm)	2 A @ 102-132 VAC, 60 Hz (240 W) Operating Range: 100-240 VAC, 50/60 Hz

* Both models include a separate 120 VAC power supply module. It provides normal power for desktop operation and can be used for separate pre-installation setup for 4100ES cabinet mount models. A 120 VAC cord is included; NEMA 5-15P plug to IEC-320 C-13 connector. For 230/240VAC use, locally obtain a cord in compliance with local safety standards.

Note: Agency listing is at 120 VAC, 60 Hz.

TrueSite Incident Commander Computer Feature Summary**

General Specifications	i5 2.4 GHZ (minimum) PC with cooling fan (4) GB RAM (minimum) (2) PCI Slots (2) 160 GB Hard Drives (minimum) (1) DVD/RW Drive	(2) Integral Amplified 2 Watt Speakers (1) VGA Video Output (required for optional 2nd monitor) Includes compact USB keyboard and mouse 100 mm VESA Mounting Interface
------------------------	---	---

TrueSite Incident Commander Server Computer Port Reference**

USB 2.0 Serial Ports	Six total; five in the rear (one is used for Server Security Dongle), and one on the side
Ethernet Ports	Two RJ45 Gigabit Ethernet LAN ports
RS-232 Serial Ports	Two DB9 RS-232 ports standard, up to six RS-232 ports total with optional 4190-6034 Quad Serial Port Card (PCI Slot Module)
PCI Slots	Two available; Note: Server uses one for the Network Interface Card
Printer Compatibility	Event printer requires UL 864 and ULC-S527 listed printer model 4190-9013 connected to USB, Serial, or Parallel Port of the Server PC (see data sheet S4190-0011); for Graphics, Screen, or Report printing, a Windows 7 compatible printer may be used (USB, Serial, Parallel, or LAN/WAN connection); printer supervision requires USB, Serial, or Parallel connection
Printable Information	Event printing; requires dedicated and supervised listed printer connected to Server for listings
	Auto-print of auto-jump graphics; prints to Windows default printer
	Reports: Historical logs, System Activity, TrueAlarm Status, TrueAlarm Service, Analog Monitor ZAM Calibration, and Active List; displayed reports can print to a LAN connected (unsupervised) printer
	Screen captures (configurable as negative images to reverse black backgrounds)

**** PLEASE NOTE:** Simplex 4190 Series TrueSite Incident Commander computers are Agency listed for use with TrueSite Workstation software. For Desktop applications where Agency listings are not required, TrueSite Workstation software should be compatible with most computers meeting the stated minimum specifications. However, due to computer manufacturers potentially using unique and/or proprietary drivers, hardware, or other software not tested with TrueSite Workstation software, there may be incompatibilities. If other computers are used, proper operation with TrueSite Workstation software may require technical adjustments by a qualified computer technician and would be the sole responsibility of the computer supplier and computer manufacturer.

Environmental Specifications

Operating Temperature	32° to 120° F (0° to 49° C)
Operating Humidity	up to 93% RH, non-condensing, at 90° F (32° C)

Server/Client Operation

TrueSite Incident Commander Computer. The TrueSite Incident Commander computer provides the functions of the Server, the Local Client, and the system configuration tools. To access the desired features, a system/job specific security service dongle is supplied and is required. For systems not using Remote Clients, the setup of the TrueSite Incident Commander PC is similar.

Remote Client. For access to TrueSite Incident Commander information at a remote location, a compatible computer, connected via a Local Area Network (LAN) is equipped with Remote Client software. There are two types of Remote Clients, those with a restricted feature set (not capable of control); and those with a password protected feature set (capable of control). Refer to data sheet S4190-0018 for additional information about creating a proprietary fire alarm remote client LAN.

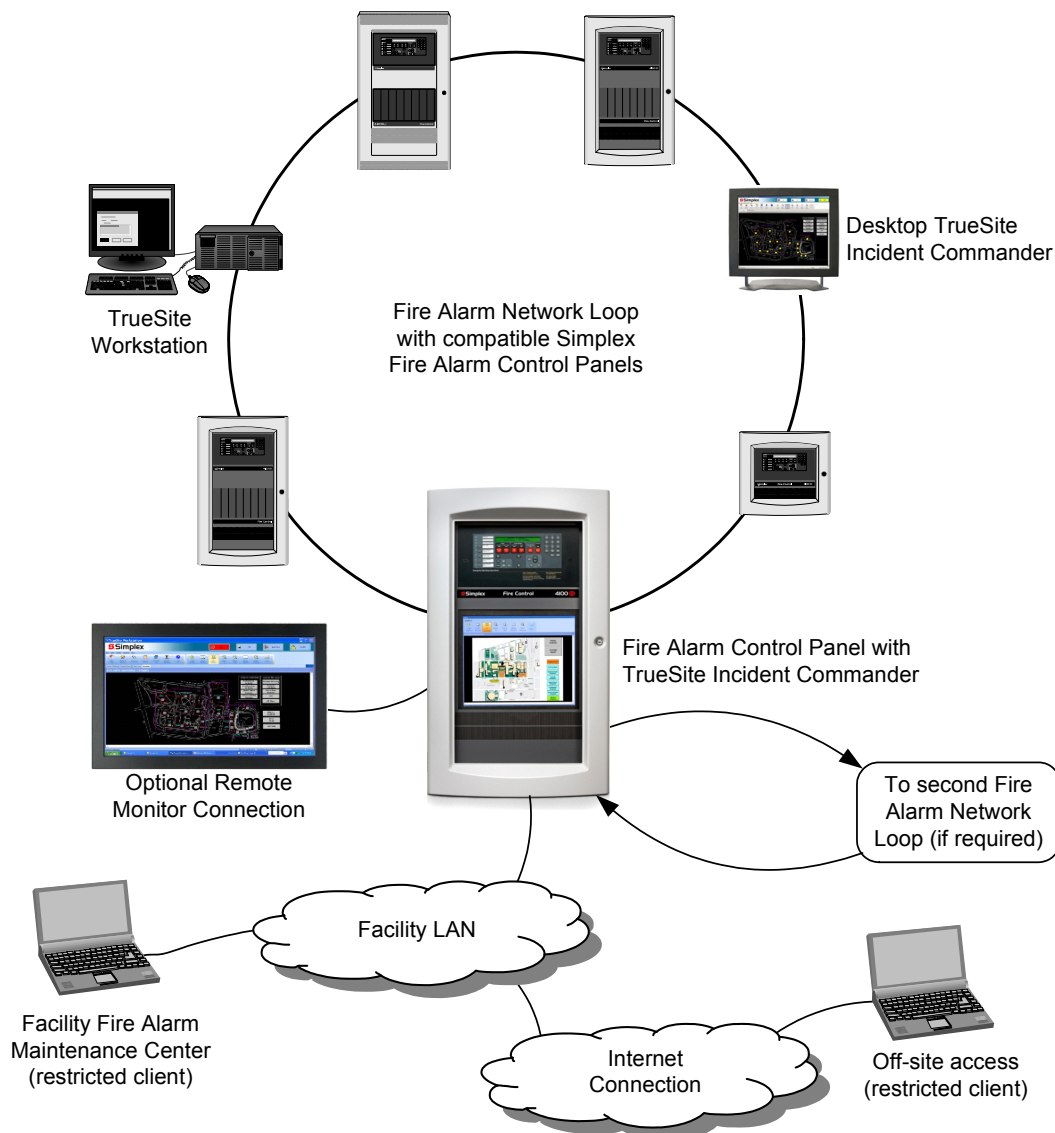
Supervised or Unsupervised Remote Clients.

Remote Clients can be designated as Supervised or Unsupervised. When Supervised, the connection is monitored by the TrueSite Incident Commander and a loss of connection is audibly reported at both ends along with a dialog screen. When unsupervised, only the client end displays a trouble dialog indicating disconnection from the Server. Remote clients may be laptop computers or other computers used for other functions and are periodically connected to query system status or create reports.

Remote Client Connections. The TrueSite workstation server supports a maximum of twenty (20) Supervised or Unsupervised remote clients, each capable of being on-line simultaneously.

(Server/Client Operation is continued next page)

System Overview Reference



Server/Client Operation (Continued)

TCP/IP Networks. The minimum recommended connection speed for TrueSite Incident Commander Server or Remote Client to a TCP/IP local area network is 3 Mbps.

Anti-Virus Software. When either the TrueSite Incident Commander Server or Remote Client computer is connected to a TCP/IP network other than a dedicated Fire Alarm network, it is highly recommended that regularly updated anti-virus software protection be installed on each connected computer. The TrueSite Incident Commander has been verified as compatible with Symantec EndPoint Protection 12.1 and McAfee Enterprise 8.8.

System Listings Reference

The following functions are agency listed with the computers and monitors identified under Product Selection on page 6:

- TrueSite Incident Commander PCs, whether stand-alone or functioning as a server to local and remote clients
- Supervised Remote Clients with protected features that are connected to the server using a dedicated Fire Alarm Network as described on page 8
- Refer to data sheet S4190-0018 for details about Fire Alarm Network Ethernet Switches

Power Supply Application Reference

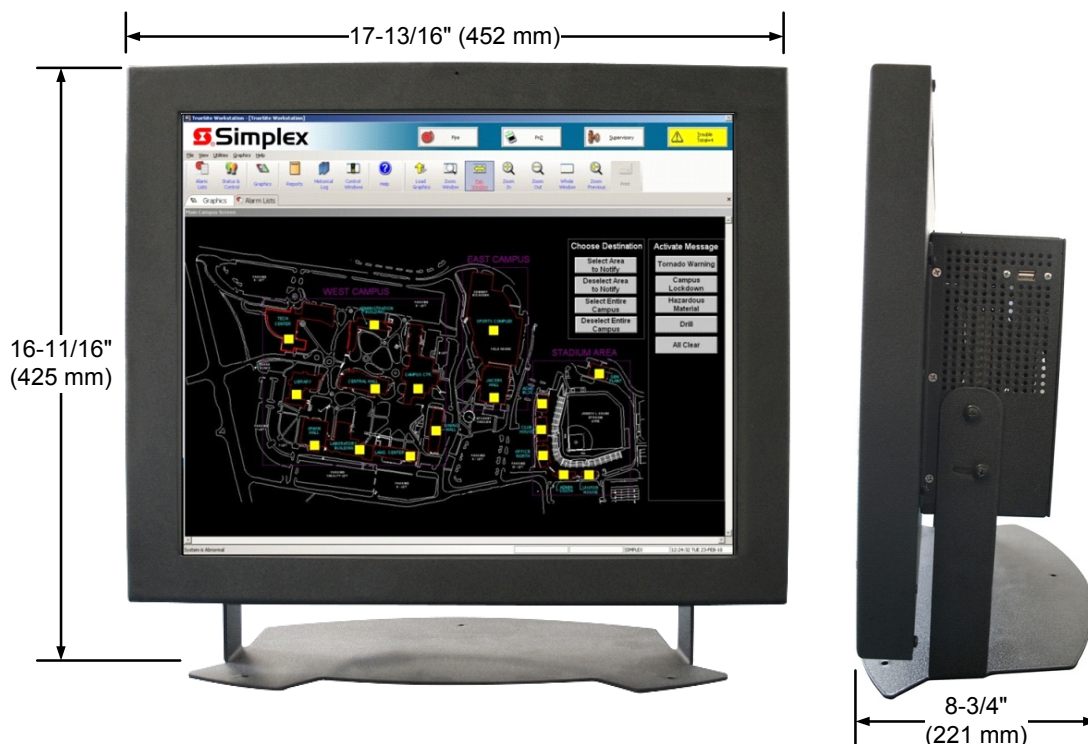
When the TrueSite Incident Commander is panel mounted, the following power supply applications guidelines apply.

1. The power supply used to power the TrueSite Incident Commander must be dedicated to the Truesite Incident Commander and internal card power only.
2. IDNet communications, Signal power, or Auxiliary (aux) power loads must be connected to a separate expansion power supply.

Additional Reference

Description	Document
TrueSite Workstation Data Sheet	S4190-0016
4100ES Basic Panel Reference Data Sheet	S4100-0031
TrueSite Incident Commander Installation Instructions for mounting in 4100ES cabinet	579-1016
Desktop Installation and Detailed Checkout Instructions	579-834
TrueSite Workstation Operation and Application instructions	579-835
TrueSite Workstation Quick Reference Operator Instructions	579-878
TrueSite Workstation Software Upgrade Instructions	579-838

TrueSite Incident Commander Desktop Dimension Reference



TYCO, SIMPLEX, and the product names listed in this material are marks and/or registered marks. Unauthorized use is strictly prohibited. Microsoft and Windows are trademarks of Microsoft Corporation in the United States and/or other countries. AutoCAD is a trademark of Autodesk, Inc. Symantec is a trademark of Symantec Corporation. McAfee is a trademark of McAfee Inc.



Tyco Fire Protection Products • Westminister, MA • 01441-0001 • USA
www.simplexgrinnell.com

S4100-0020 9/2012

© 2012 Tyco Fire Protection Products. All rights reserved. All specifications and other information shown were current as of document revision date and are subject to change without notice.